



GMT MONTHLY MEMBERSHIP PROGRESS REPORT

Results as of: 1/31/2019

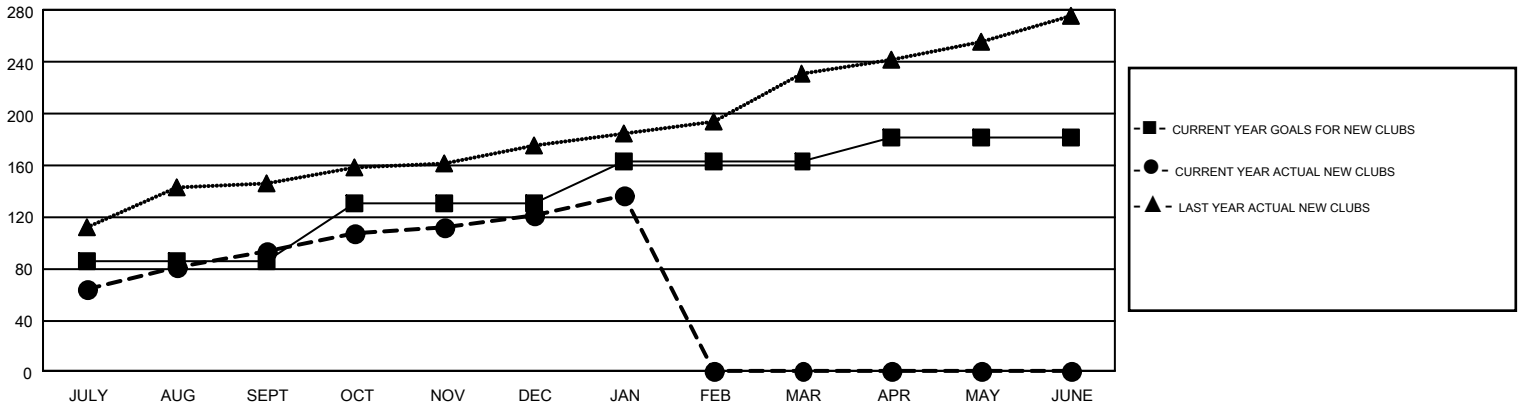
GMT Constitutional Area 6, Group A

GMT: SWADESH RANJAN SAHA

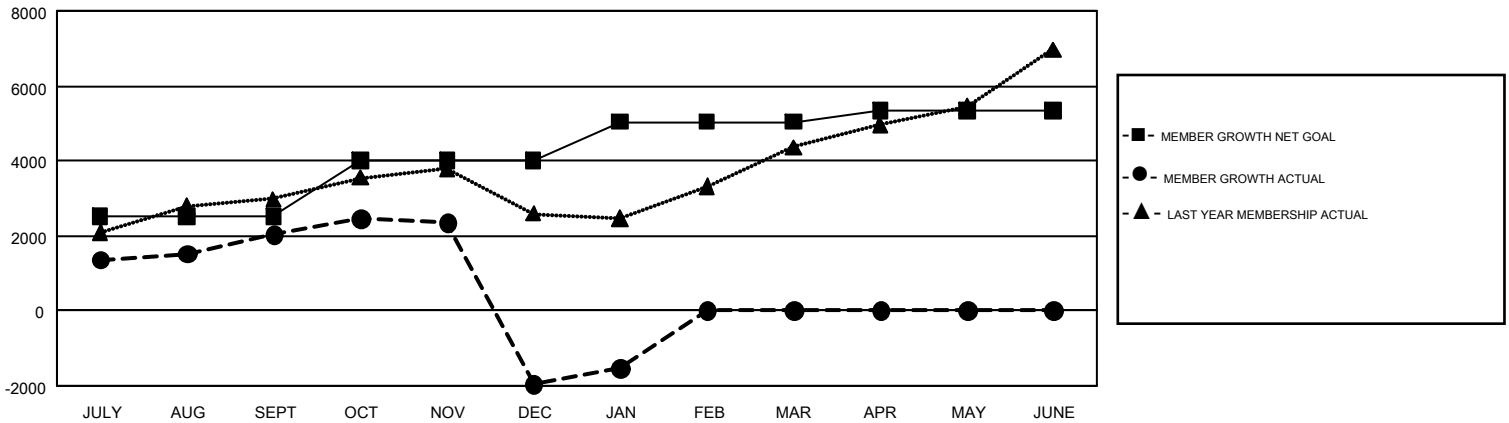
REPORT DOES NOT INCLUDE CLUBS IN UNDISTRICTED AREAS.

Clubs				Members			
RESULTS FOR 2018-2019				RESULTS FOR 2018-2019			
QUARTER	NEW CLUB GOAL	NEW CLUBS	DROPPED CLUBS	QUARTER	MEMBER GROWTH NET GOAL	MEMBER GROWTH ACTUAL	DROPPED MEMBERS ACTUAL (including transfers)
JULY/AUG/SEPT	86	94	22	JULY/AUG/SEPT	2,525	3,850	1,649
OCT/NOV/DEC	45	27	106	OCT/NOV/DEC	1,470	2,240	6,139
JAN/FEB/MAR	32	16	9	JAN/FEB/MAR	1,044	1,039	463
APR/MAY/JUNE	18	0	0	APR/MAY/JUNE	300	0	0

GOALS AND ACTUAL NEW CLUBS CUMULATIVE



GOALS AND ACTUAL MEMBERS CUMULATIVE



DROPPED CLUBS: 137	771 CLUBS OF 1,800 ADDED 1 OR MORE NEW MEMBERS	GENDER DISTRIBUTION MALE 41,002 (72.73%) FEMALE 15,375 (27.27%)
DROPPED MEMBERS DECEASED 80 CLUB CANCELLED 3,926 OTHER 4,246 <hr/> TOTAL 8,252	CLICK HERE FOR CUMULATIVE MEMBERSHIP DATA	TOTAL FAMILY UNIT MEMBERS 25,334 FAMILY MEMBERS PAYING HALF DUES 15,432